

Case Study

Asset Condition Assessment

The Client

The Sydney Catchment Authority controls the entire catchment area and storage facilities for Australia's largest city, with assets valued in excess of \$6 billion.

Due to the massive geographical disbursement of assets the Authority needed to regain control of its asset database, and ensure that all computer records were accurate, concise, and up-to-date.

The Authority realized that to achieve this goal with its own resources was impractical and the Asset Condition Assessment team from MCP-AMIS was commissioned to perform this massive task.

The Methodology

MCP Engineers visited each and every site controlled by the Authority. Asset data collected included:

- Asset Description
- Asset Function
- Asset Condition and Operational Status
- GPS and Digital Imaging
- Age and Residual Life

Integral to the process a "Plant Address Reference" (PAR) system was developed that identified all assets according to a "Functional Location". The PAR was then used in conjunction with digital imaging technology as a tool in the criticality sessions.

Every item in the 6000 strong database was assessed for its criticality in relation to the business objectives of the Authority.

The Outcomes

The Sydney Catchment Authority now has a complete and accurate database containing:

- Listings for all items requiring attention to be brought to an acceptable standard.

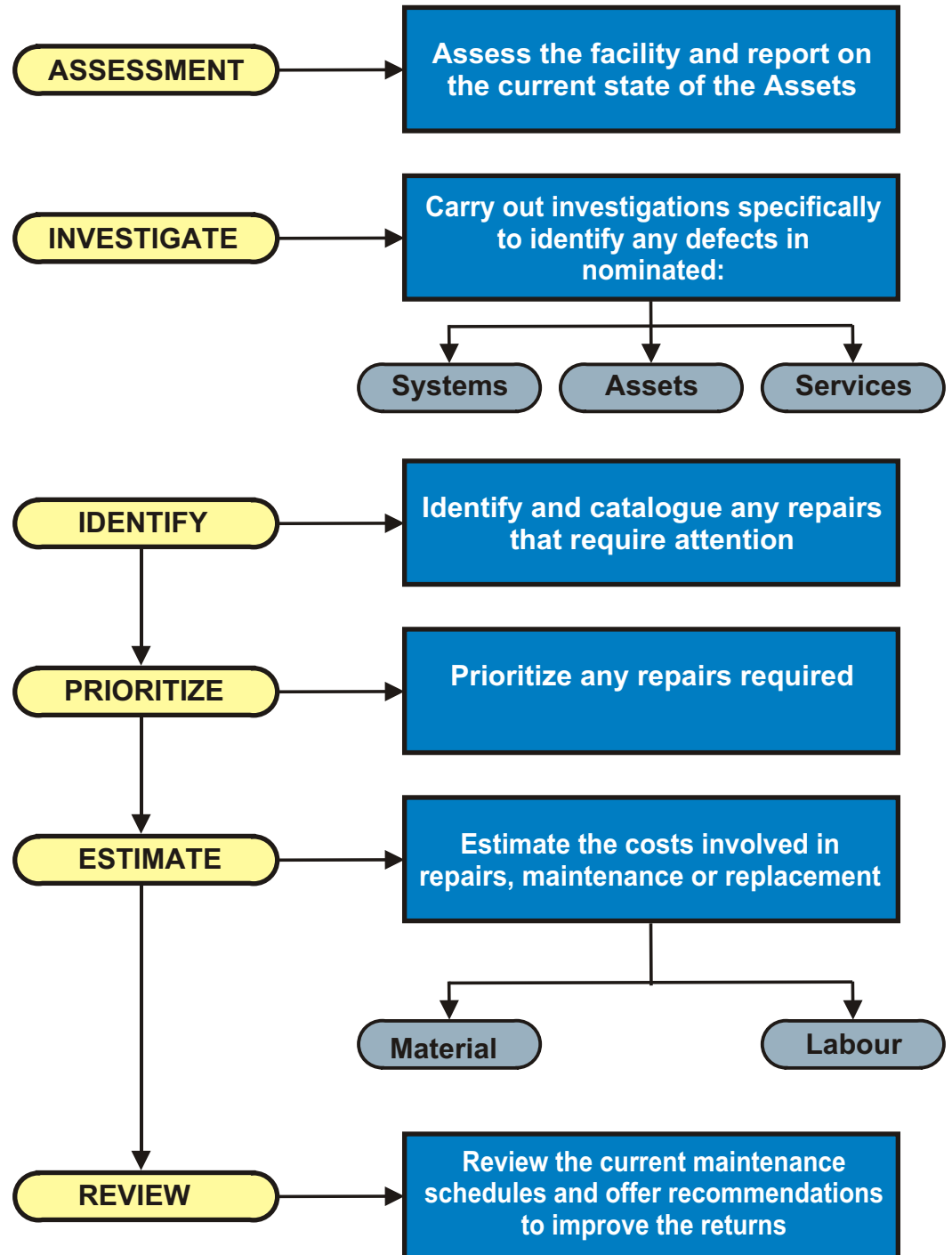
- Residual Life estimates for all assets

- Modern Maintenance regimens for assets

- Criticality Analysis of Assets

- Digital Imaging and GPS information for positive identification

THE MCP-AMIS METHODOLOGY



MCP

AMIS

MAINTENANCE
MANAGEMENT ENGINEERS

© 2002 - MCP-AMIS Pty Ltd

MCP AMIS MAINTENANCE MANAGEMENT ENGINEERS

ABN 14 067 285 303

MCP
AMIS
MAINTENANCE
MANAGEMENT ENGINEERS

21 Activity Crescent
Ernest. 4214
Australia

Tel: +61 (7) 5564 6637
Email: enquiries@mcp-cg.com
Web: www.mcp-cg.com