

## Case Study

### Asset Condition Assessment



#### ***The Client***

The Gold Coast Institute of Technical and Further Education (GCIT) is located in Australia's sixth largest city. The GCIT is responsible for the training of Apprentices, Technicians and a wide range of Para-Professionals across the industrial spectrum.

To keep abreast of technological changes, the Institute realized if trainees were to be viable candidates in the employment market they must be trained in the use of up-to-date equipment.

The Asset Condition Assessment team from MCP-AMIS was commissioned to perform an Audit of training assets to determine the suitability for today's demanding standards in industry.

#### ***The Methodology***

MCP Engineers visited various Institute Campuses that covered a variety of vocations. Asset data collected included:

- Asset Description
- Asset Function
- Asset Condition and Operational Status
- Relevance to modern industry
- Estimated Modernization Costs

The process not only involved simple asset data collection, but included Occupational Health & Safety assessments. The use of digital imaging technology assisted in not only asset identification but also in the identification of immediate fault rectification works.

#### ***The Outcomes***

The Gold Coast Institute of Technical and Further Education now has a complete and accurate database containing:

Listings for all items that should be updated to "Industry Standard".

Listings for all items requiring attention to be brought to an acceptable standard.

A 5-year "Modernization Budget"

Residual Life estimates for all assets

Modern Maintenance regimens for assets

**MCP**  
**AMIS**

OPERATIONS MANAGEMENT &  
MAINTENANCE ENGINEERS

© 2002 - MCP-AMIS Pty Ltd

21 Activity Crescent  
Ernest, 4214. Australia  
Tel: (07) 5564 6637  
Intl: +61 7 5564 6637

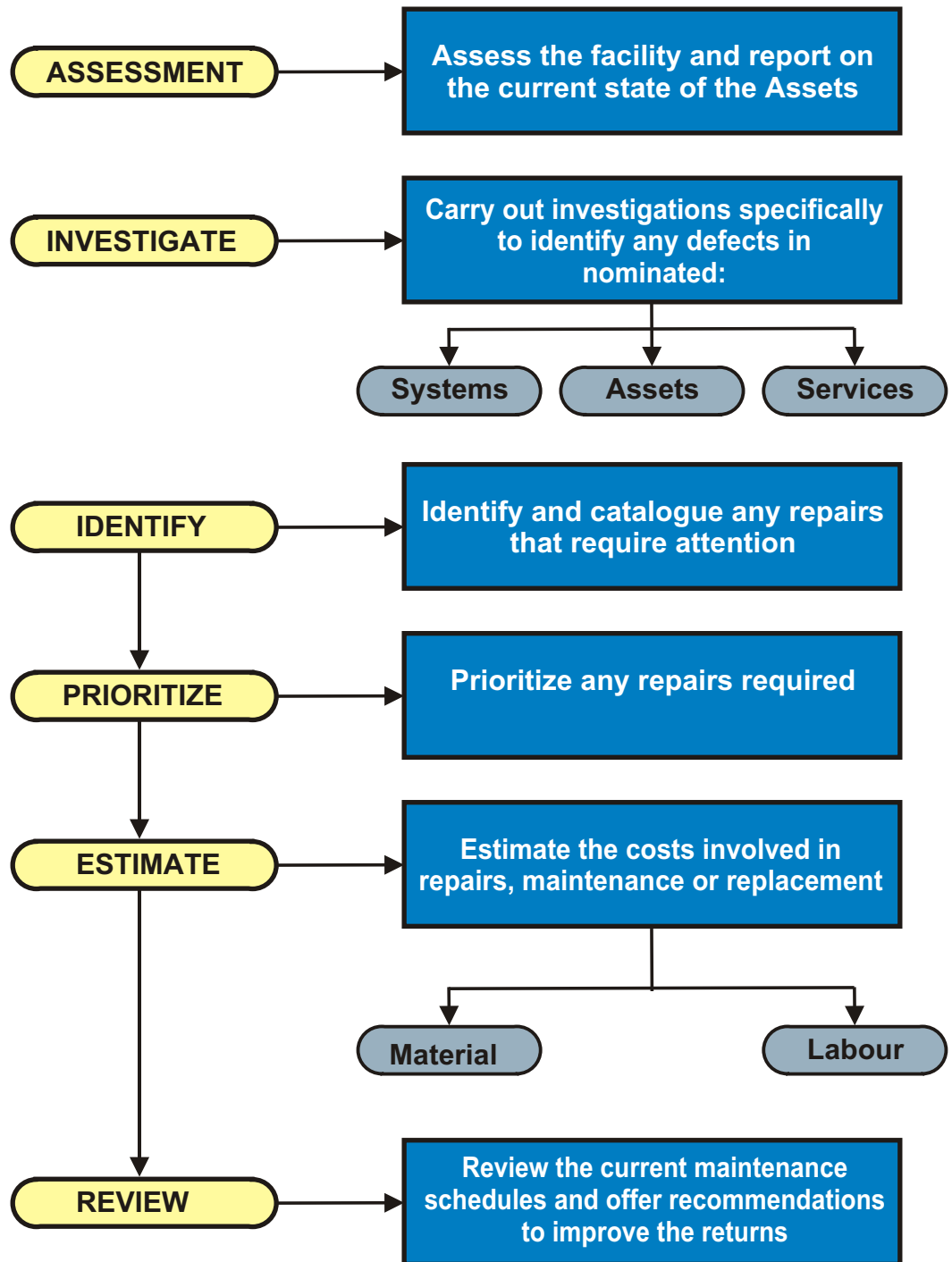
**MCP AMIS MAINTENANCE MANAGEMENT ENGINEERS**

ABN 14 067 285 303

**MCP**  
**AMIS**

Email: [enquiries@mcp-cg.com](mailto:enquiries@mcp-cg.com)  
Web: <http://www.mcp-cg.com>

## THE MCP-AMIS METHODOLOGY



**MCP**

**AMIS**

MAINTENANCE  
MANAGEMENT ENGINEERS

© 2002 - MCP-AMIS Pty Ltd

**MCP AMIS MAINTENANCE MANAGEMENT ENGINEERS**

ABN 14 067 285 303

**MCP**  
**AMIS**  
MAINTENANCE  
MANAGEMENT ENGINEERS

21 Activity Crescent  
Ernest. 4214  
Australia

Tel: +61 (7) 5564 6637  
Email: [enquiries@mcp-cg.com](mailto:enquiries@mcp-cg.com)  
Web: [www.mcp-cg.com](http://www.mcp-cg.com)